

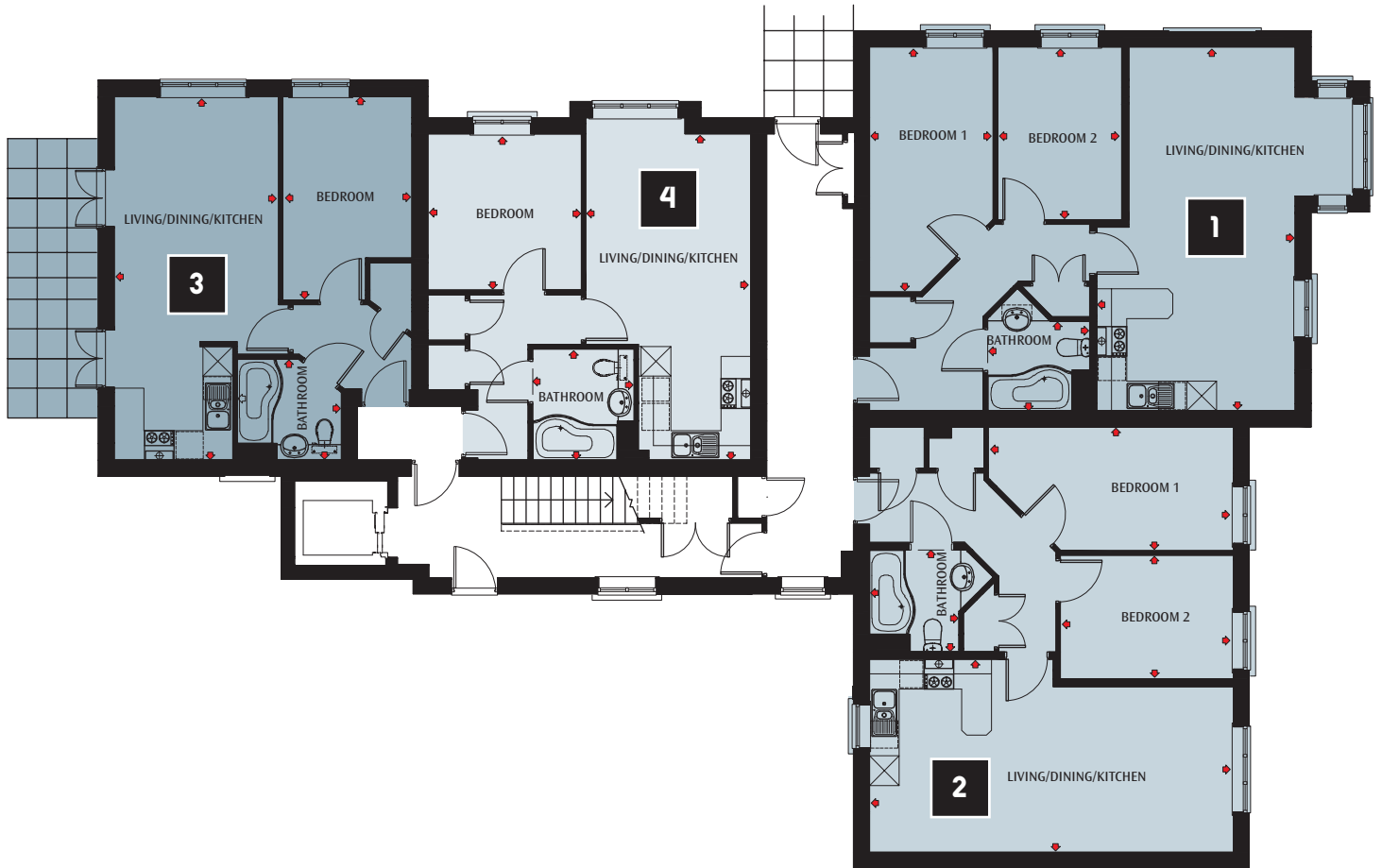
MEADOWSIDE APARTMENTS

Superior luxury homes at

1c Daysbrook Road,
Streatham,

London SW2 3TF
01883 341111

Ground Floor



➤ Arrows indicate approximate dimensions at widest point

Apartment 1

Living / Dining / Kitchen
7.34m x 4.00m (24' 1" x 13' 2")

Bedroom 1
4.95m x 2.49m (16' 3" x 8' 2")

Bedroom 2
3.49m x 2.50m (11' 6" x 8' 3")

Bathroom
2.06m x 1.79m (6' 9" x 5' 11")

Apartment 2

Living / Dining / Kitchen
7.35m x 3.90m (24' 2" x 12' 10")

Bedroom 1
4.95m x 2.50m (16' 3" x 8' 3")

Bedroom 2
3.49m x 2.50m (11' 6" x 8' 3")

Bathroom
2.05m x 1.80m (6' 9" x 5' 11")

Apartment 3

Living / Dining / Kitchen
7.35m x 3.32m (24' 2" x 10' 11")

Bedroom
4.11m x 2.59m (13' 6" x 8' 6")

Bathroom
2.11m x 2.03m (6' 11" x 6' 8")

Apartment 4

Living / Dining / Kitchen
6.58m x 3.33m (21' 8" x 10' 11")

Bedroom
3.16m x 3.09m (10' 4" x 10' 2")

Bathroom
2.23m x 2.04m (7' 4" x 6' 9")