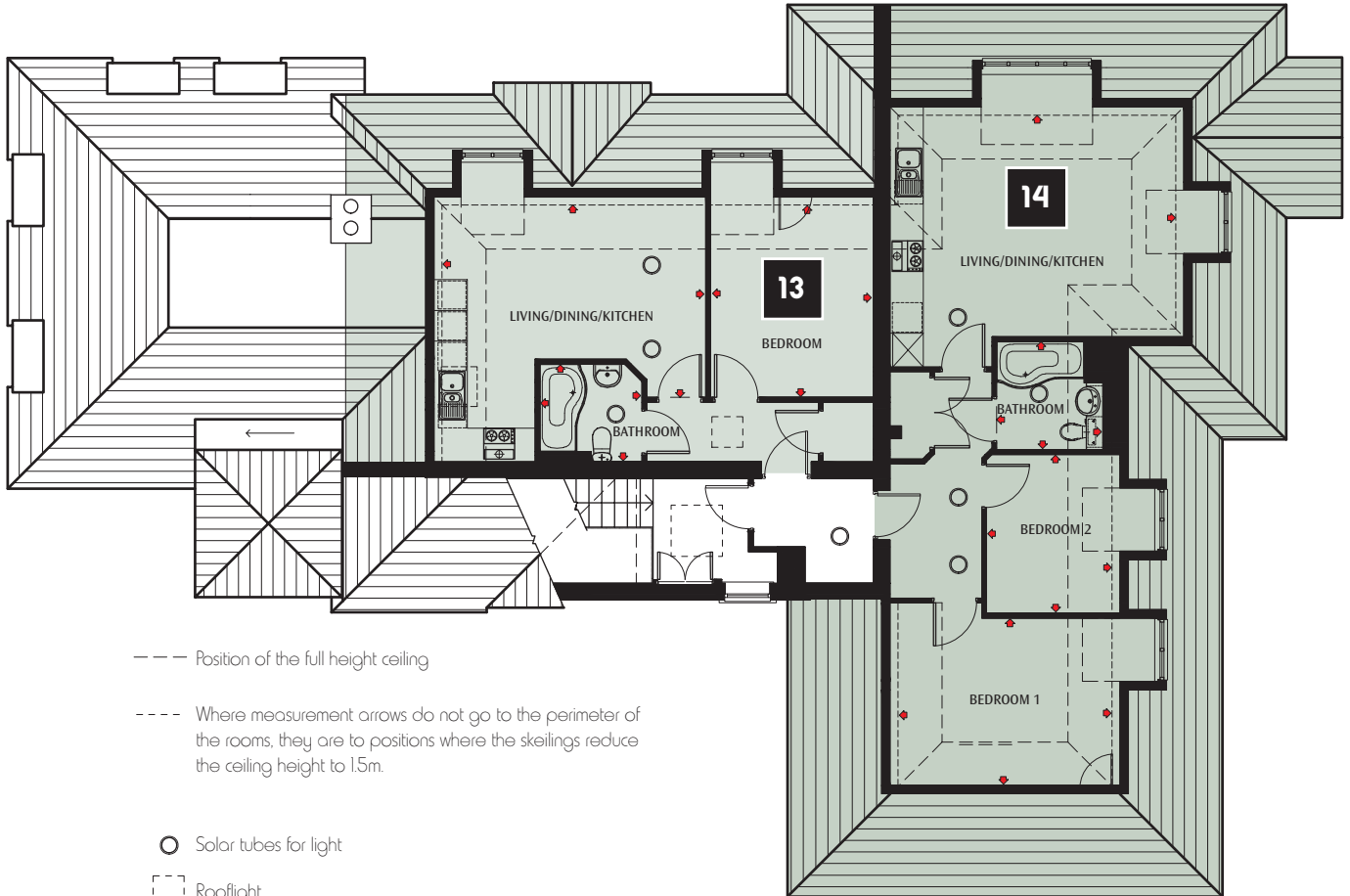


MEADOWSIDE APARTMENTS

Superior luxury homes at
1c Daysbrook Road,
Streatham,
London SW2 3TF
01883 341111

Third Floor



▲ Arrows indicate approximate dimensions at widest point

Apartment 13

Living / Dining / Kitchen
5.14m x 3.75m (16' 11" x 12' 4")

Bedroom
3.75m x 3.18m (12' 4" x 10' 5")

Bathroom
1.99m x 1.91m (6' 6" x 6' 3")

Apartment 14

Living / Dining / Kitchen
5.42m x 4.17m (17' 9" x 13' 8")

Bedroom 1
4.17m x 3.26m (13' 8" x 10' 9")

Bedroom 2
3.01m x 2.45m (9' 11" x 8' 0")

Bathroom
2.07m x 2.02m (6' 9" x 6' 8")